

ERASMUS DAYS 2020

School of Electrical and Computer Engineering
Aristotle University of Thessaloniki



Dimitrios Lampridis

labridis@auth.gr



With the support of the
Erasmus+ Programme
of the European Union



03/11/2020

Copyright © eACCESS



With the support of the
Erasmus+ Programme
of the European Union



Aristotle University of Thessaloniki

- The Aristotle University of Thessaloniki was founded in 1925 during the First Greek Republic.
- Today the main campus extends over an area of 137 acres in the heart of the city. The number of students is about 70,000 in 35 Schools that cover the full range of scientific disciplines.
- Because of its size, its structure and its activities the University of Thessaloniki is the largest and most complex of Greek Higher Institutions.





With the support of the
Erasmus+ Programme
of the European Union



School of Electrical and Computer Engineering

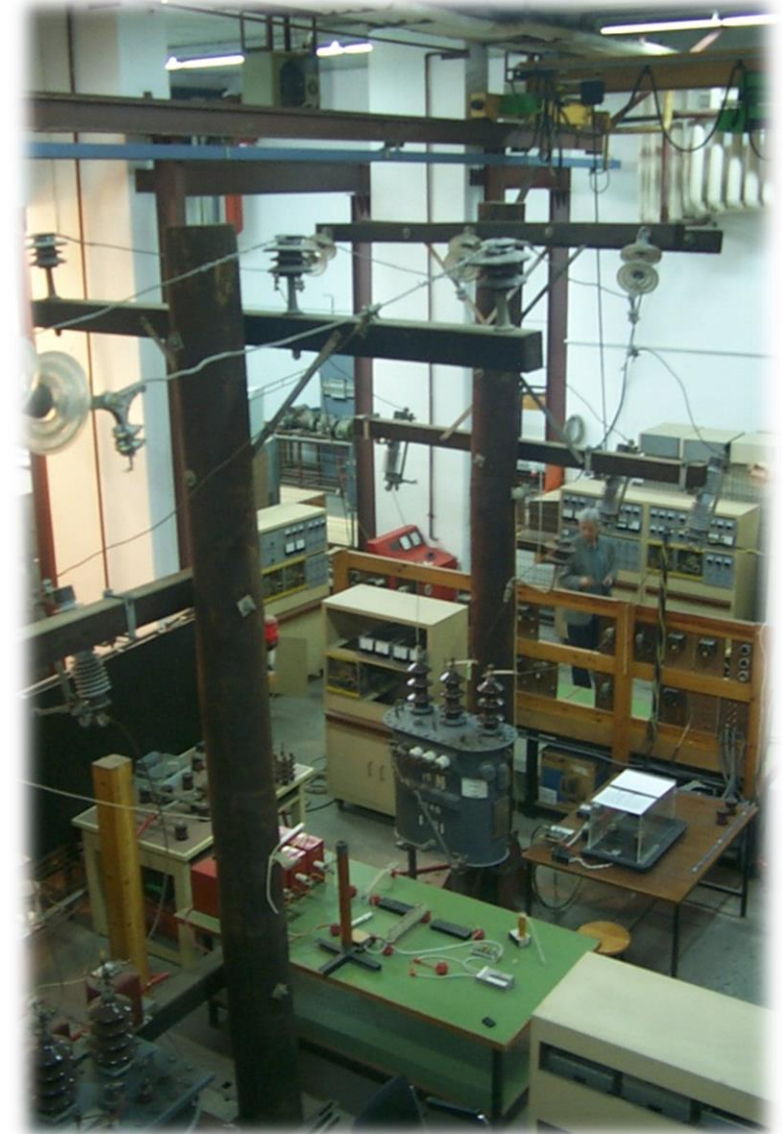
- The School of Electrical Engineering was established by the Decree 400/72 and started in the academic year 1972-73.
- According to the Decree 266/93 the School was renamed as School of Electrical and Computer Engineering.
- About 1400 undergraduate and 80 postgraduate students are enrolled in the school.
- Three distinct specializations being supported by the corresponding Departments:
 - Department of Electrical Energy
 - Department of Electronics and Computer Engineering
 - Department of Telecommunications





Research Areas

- Electric Energy Generation, Transmission, Distribution and Utilization
- Electric Power System economic operation and management
- Distributed Energy Resources
- Smart Grids
- Powerline Communications
- Integration of Renewable Energy Sources
- Sustainable Energy Management and Savings
- Demand Side Management





With the support of the
Erasmus+ Programme
of the European Union



Role in the project

- Managers of Pillar I (development of courses)
 - Determination of current status with respect to partner university curricula
 - Determination of new/updated bachelor/master courses
 - Management of the course development
- Assistance of Pillars II (Laboratories) and III (Software Platform)





With the support of the
Erasmus+ Programme
of the European Union



Thank you for your attention!



Power Systems Laboratory
School of Electrical & Computer Engineering
Aristotle University of Thessaloniki
P.O. Box 486
54124 Thessaloniki, Greece



Dimitrios Lampridis



labridis@auth.gr



http://users.auth.gr/labridis/index_en.htm